

DST Balance

The DST Balance is a multi-functional device for diagnosing and exercising patients who suffer from lower extremity impairments, balance difficulties, and coordination deficits.

The device includes:

- Pressure mapping system ◦
- 13" tablet and tablet holder ◦
- 3 games controlled by patients' CoM ◦

Pressure mapping & balance games

54/54cm pressure mat

2916 sensors

1
Diagnose



2
Play



3
Improve

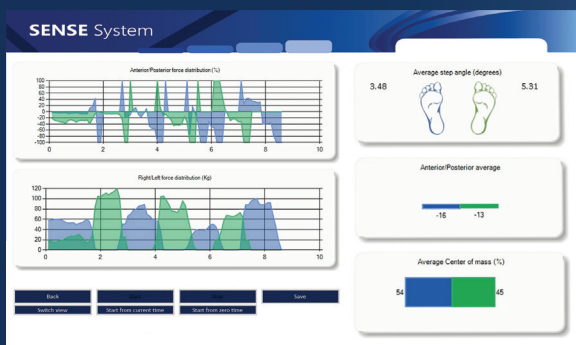


Diagnose

With over 2900 sensors, you can diagnose patients' lower extremity impairments, balance difficulties, and coordination deficits.

Analyzed data includes:

- A/P force distribution
- R/L force distribution
- Center of Mass
- Feet angle



Play

The DST Balance turns common physiotherapy exercises into interactive and challenging games, to increase patients' motivation and sense of accomplishment. It combines a force sensor mat with game app.

